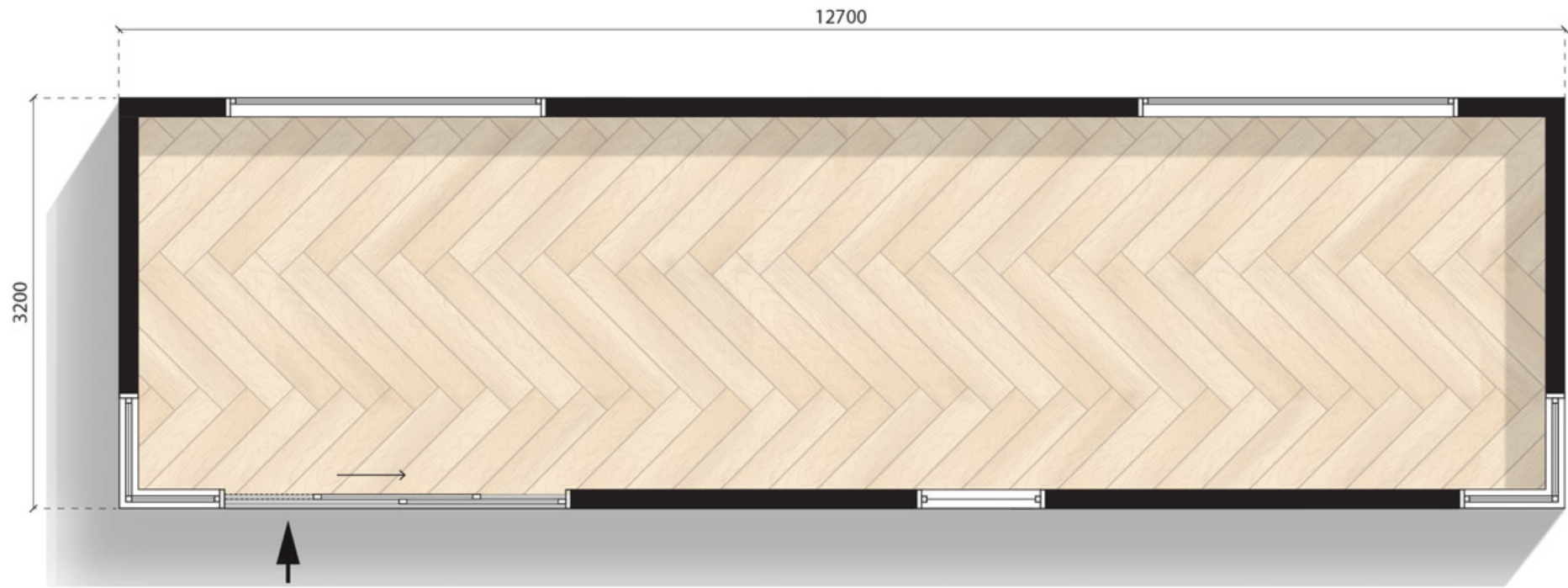


The King

12.7m X 3.2m



Please note: floor plans are intended to give a general indication of the proposed layout only. All images and dimensions are not intended to form part any contract or warranty.



The King

12.7m X 3.2m

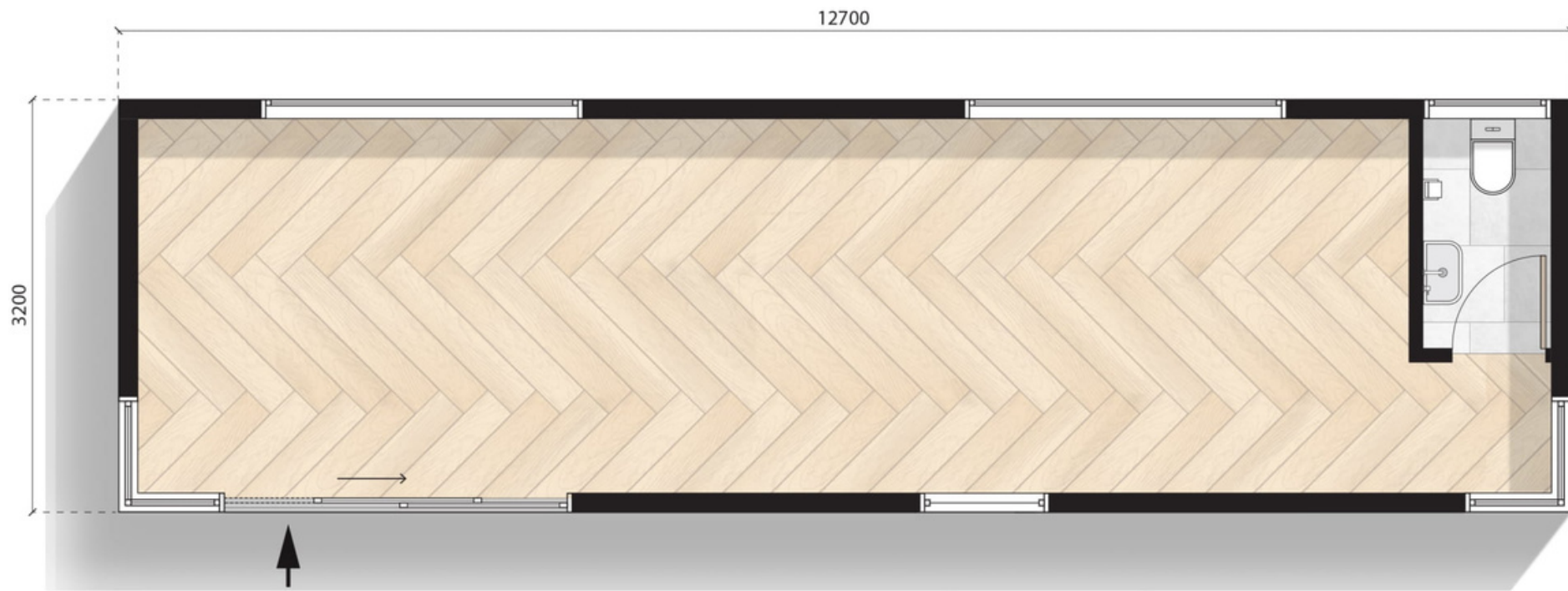
Configuration: Open plan

MODN-12x3.2-KING-OP



MODNPODS

MODULAR LIVING



The King

12.7m X 3.2m

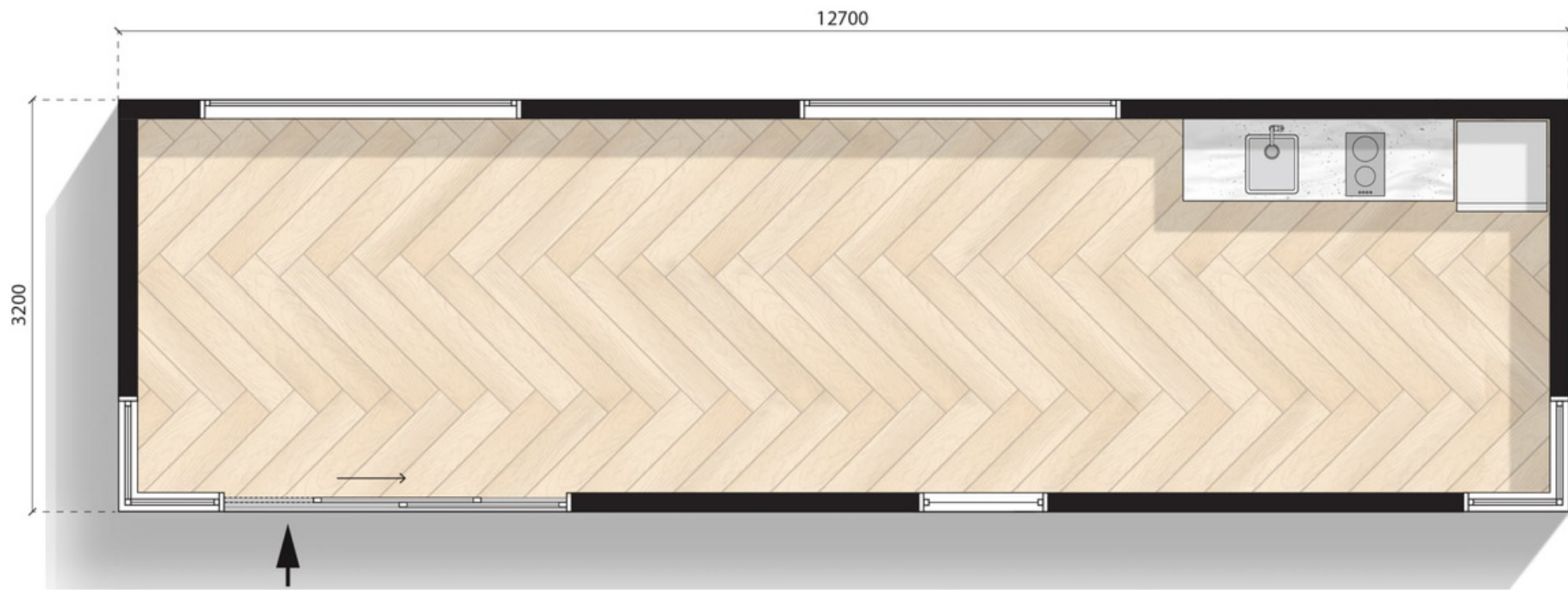
Configuration: Powder room

MODN-12x3.2-KING-PR



MODNPODS

MODULAR LIVING



The King

12.7m X 3.2m

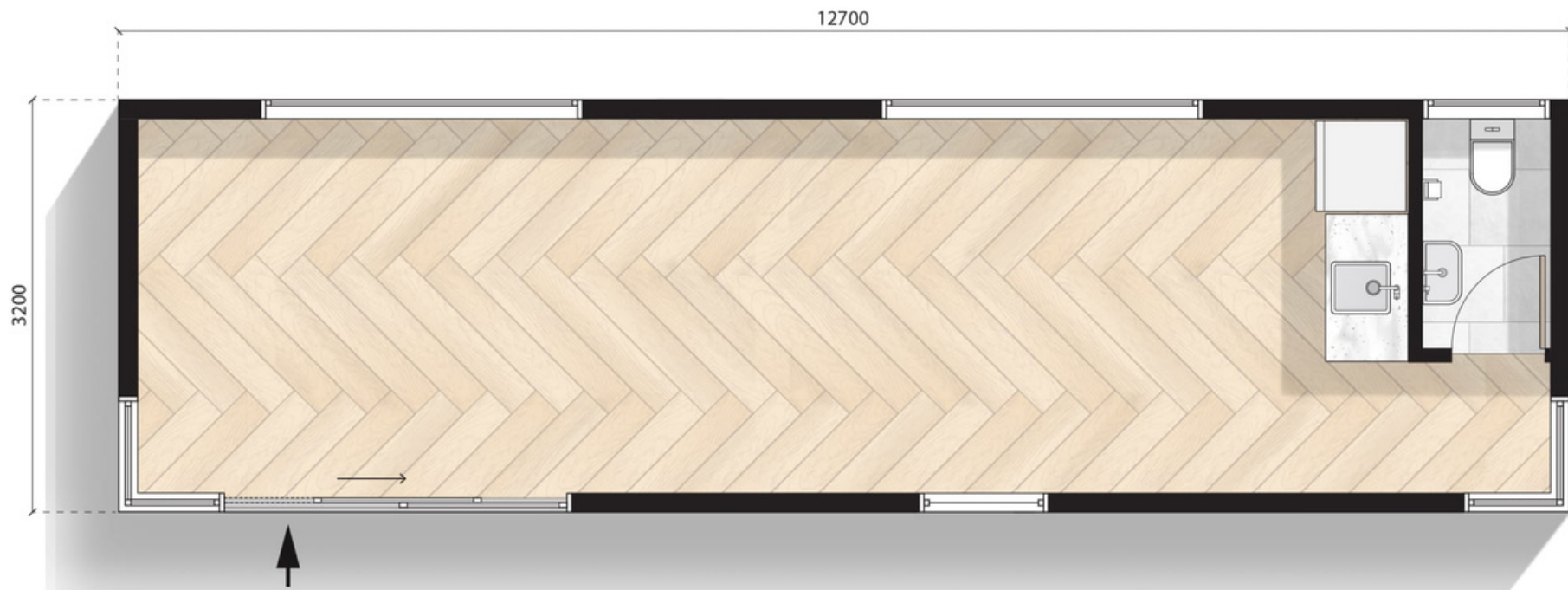
Configuration: K2 Kitchenette

MODN-12x3.2-KING-K2



MODNPODS

MODULAR LIVING



The King

12.7m X 3.2m

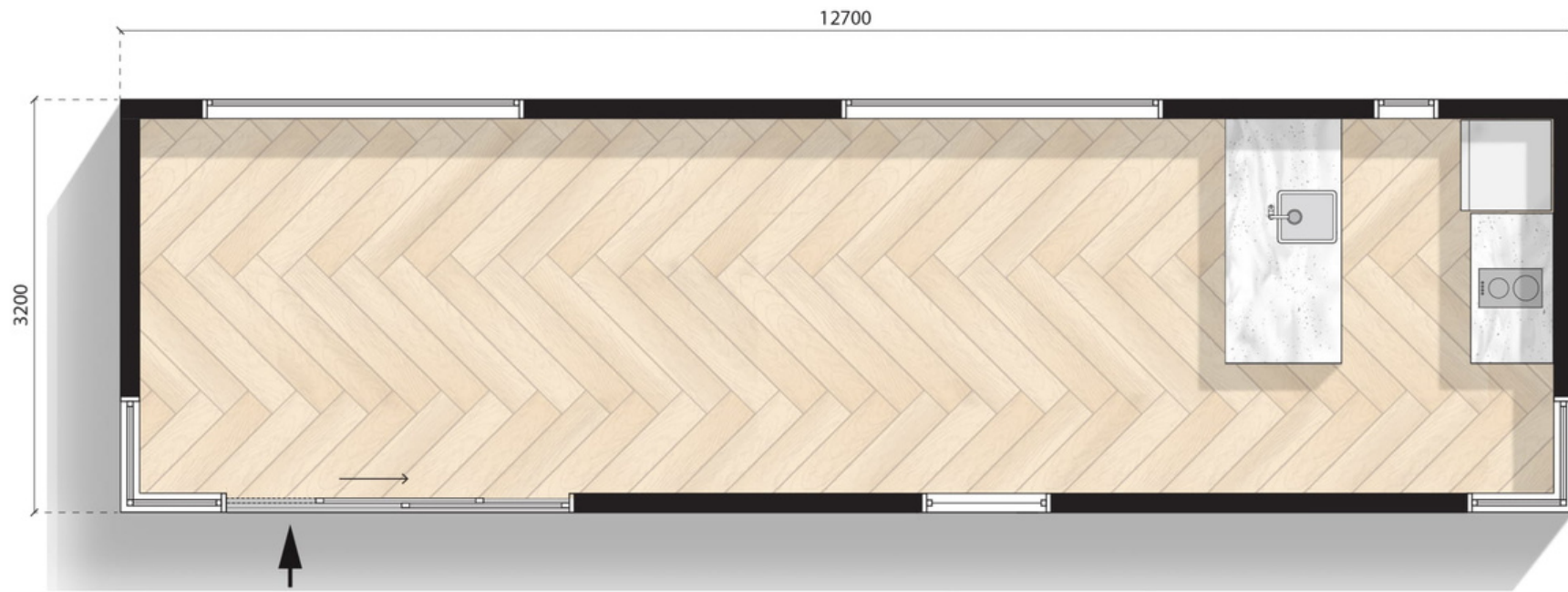
Configuration: Powder room + K1 kitchenette

MODN-12x3.2-KING-KT1PR



MODNPODS

MODULAR LIVING



The King

12.7m X 3.2m

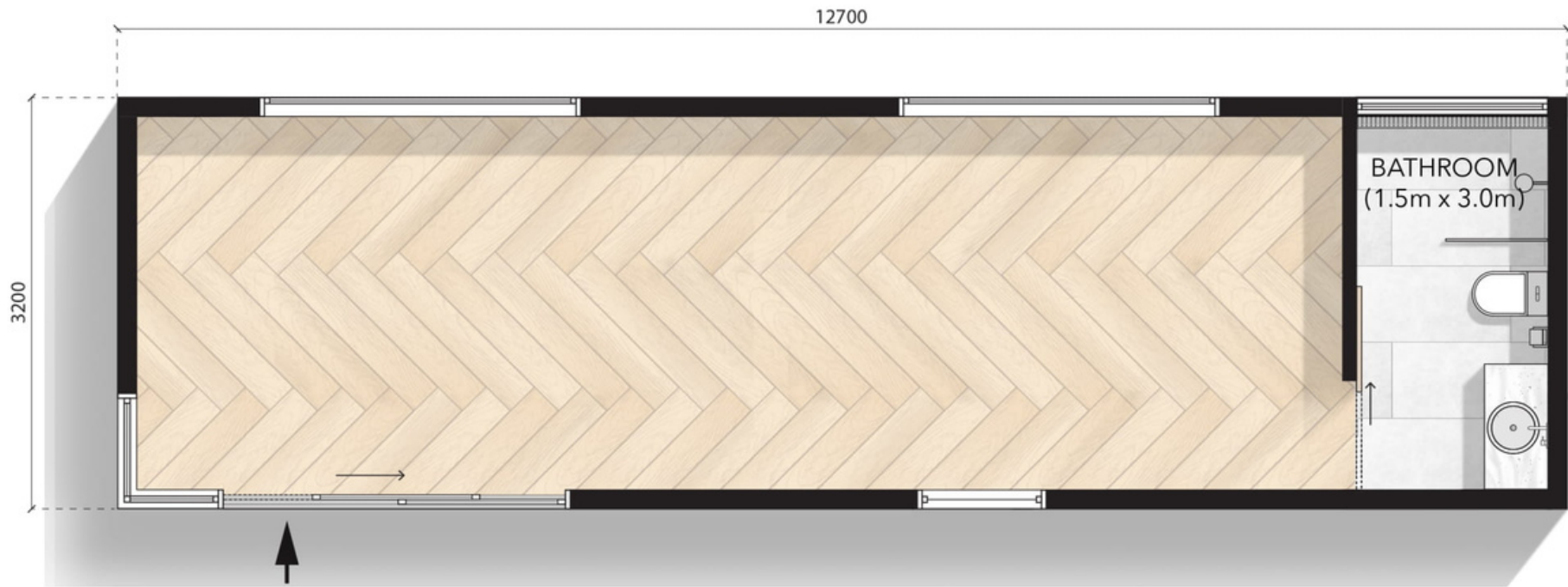
Configuration: K3 kitchen

MODN-12x3.2-KING-K3



MODNPODS

MODULAR LIVING



The King

12.7m X 3.2m

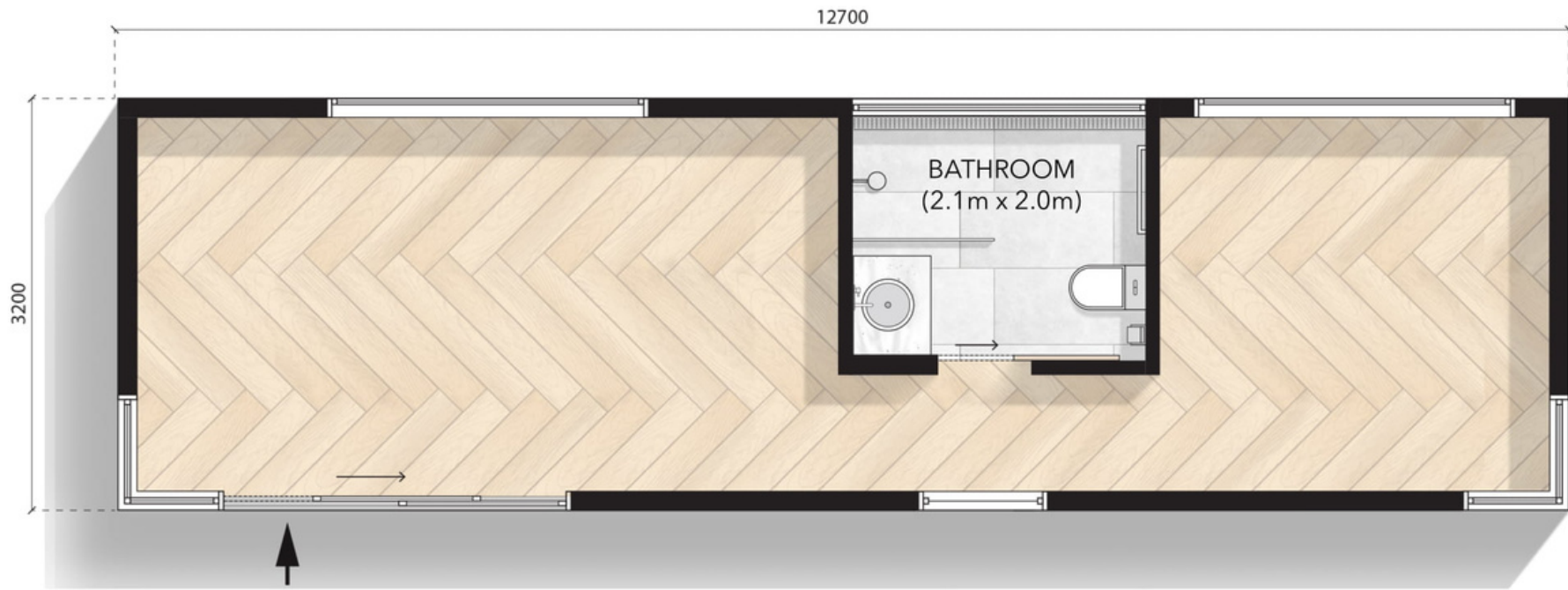
Configuration: B2 Bathroom

MODN-12x3.2-KING-BR2



MODNPODS

MODULAR LIVING



The King

12.7m X 3.2m

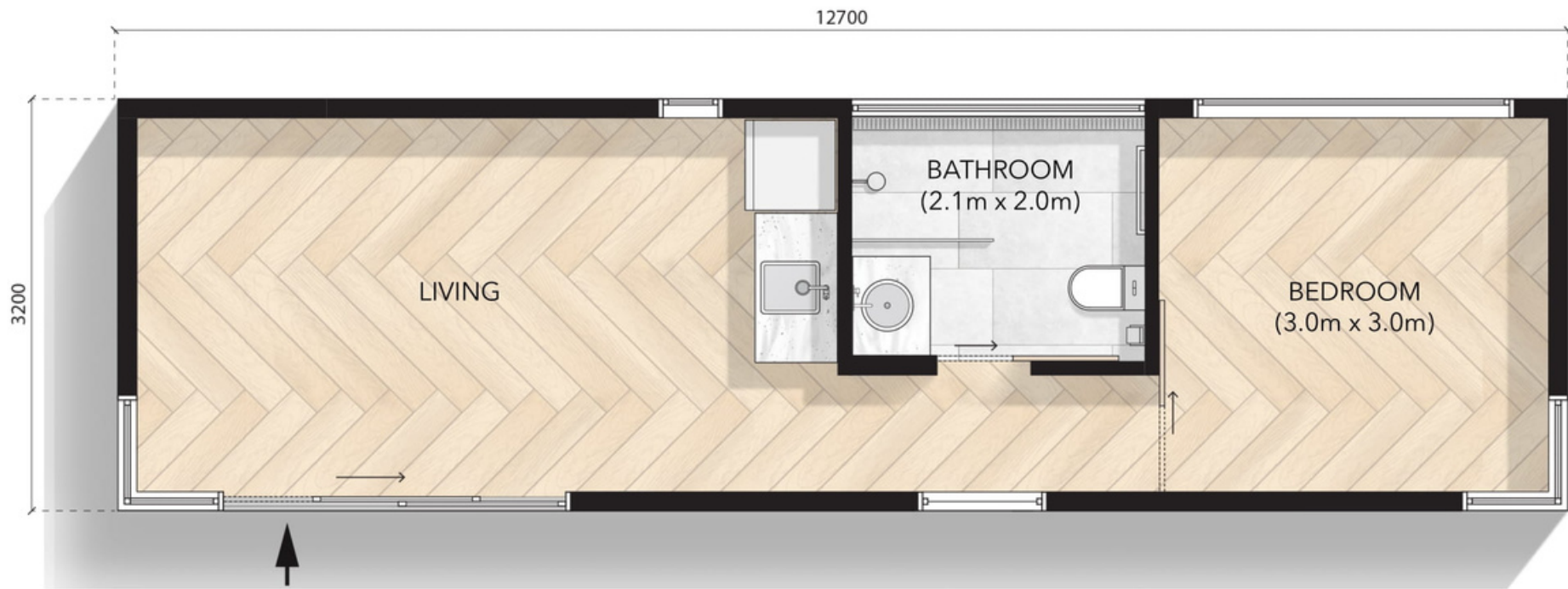
Configuration: B3 bathroom

MODN-12x3.2-KING-BR3



MODNPODS

MODULAR LIVING



The King

12.7m X 3.2m

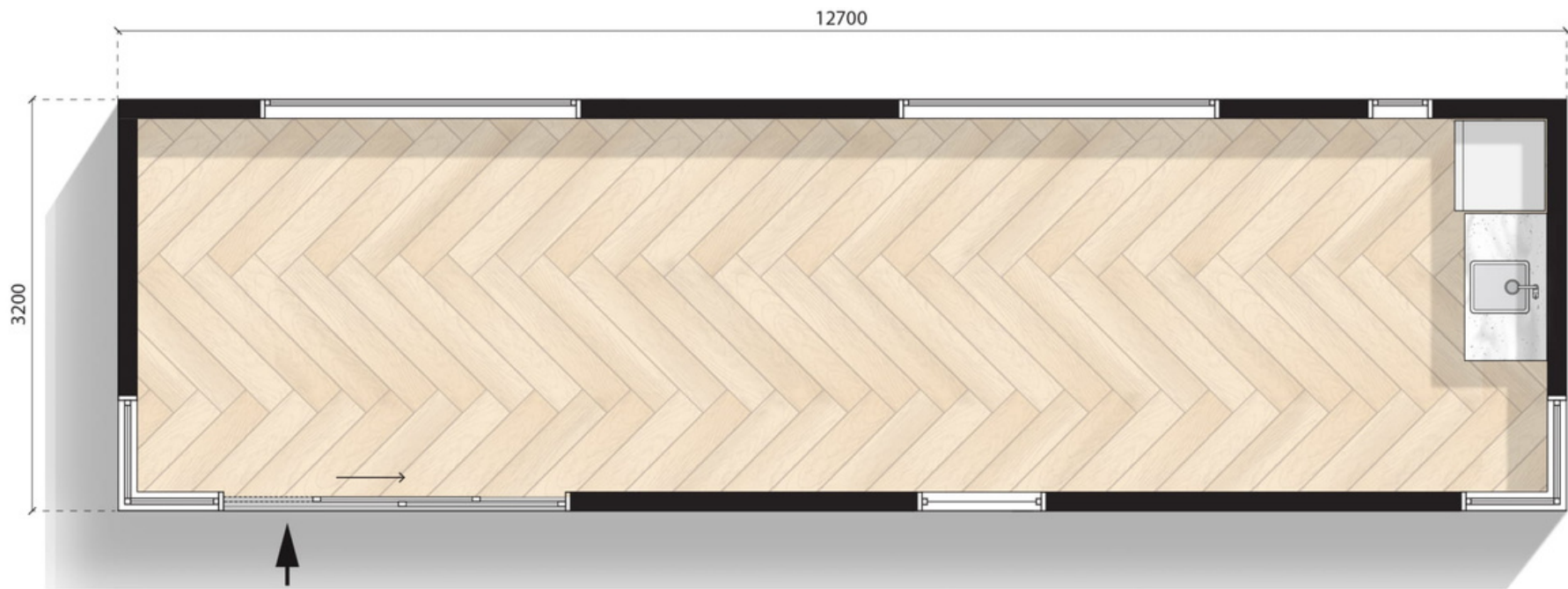
Configuration: Bedroom, B3 bathroom, K1 kitchenette

MODN-12x3.2-KING-BBR3K1



MODNPODS

MODULAR LIVING



The King

12.7m X 3.2m

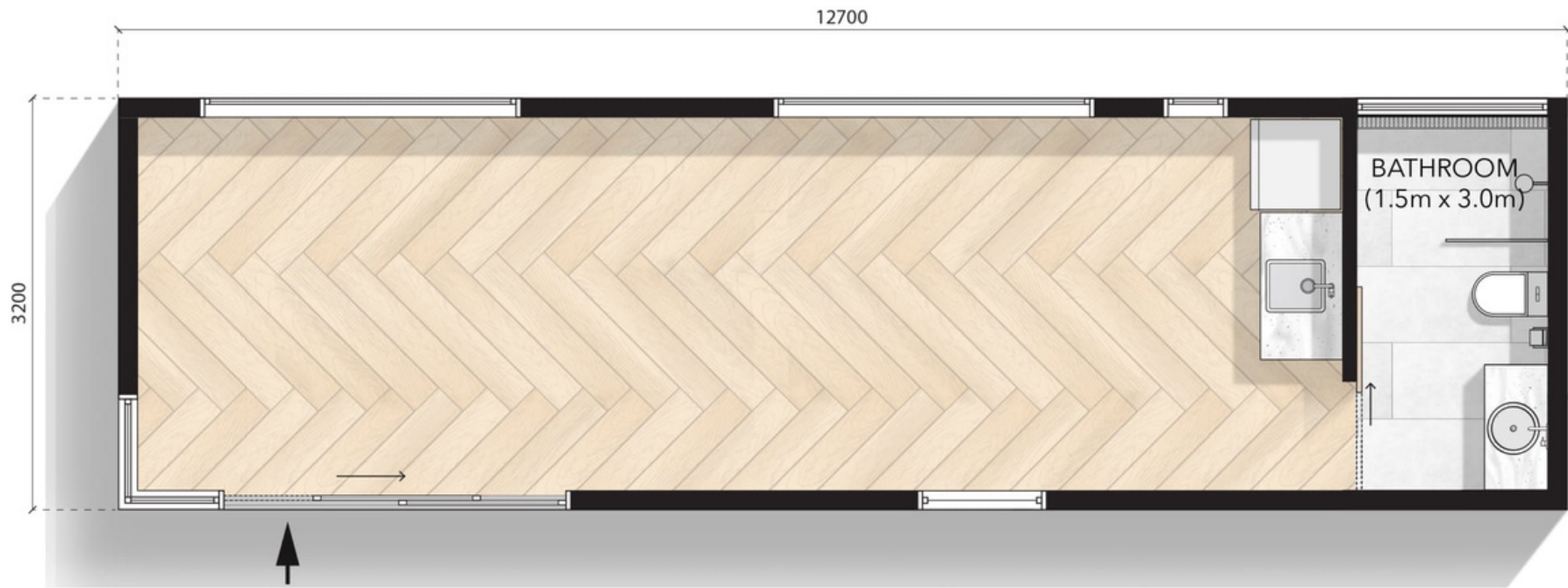
Configuration: K1 Kitchenette

MODN-12x3.2-KING-K1



MODNPODS

MODULAR LIVING



The King

12.7m X 3.2m

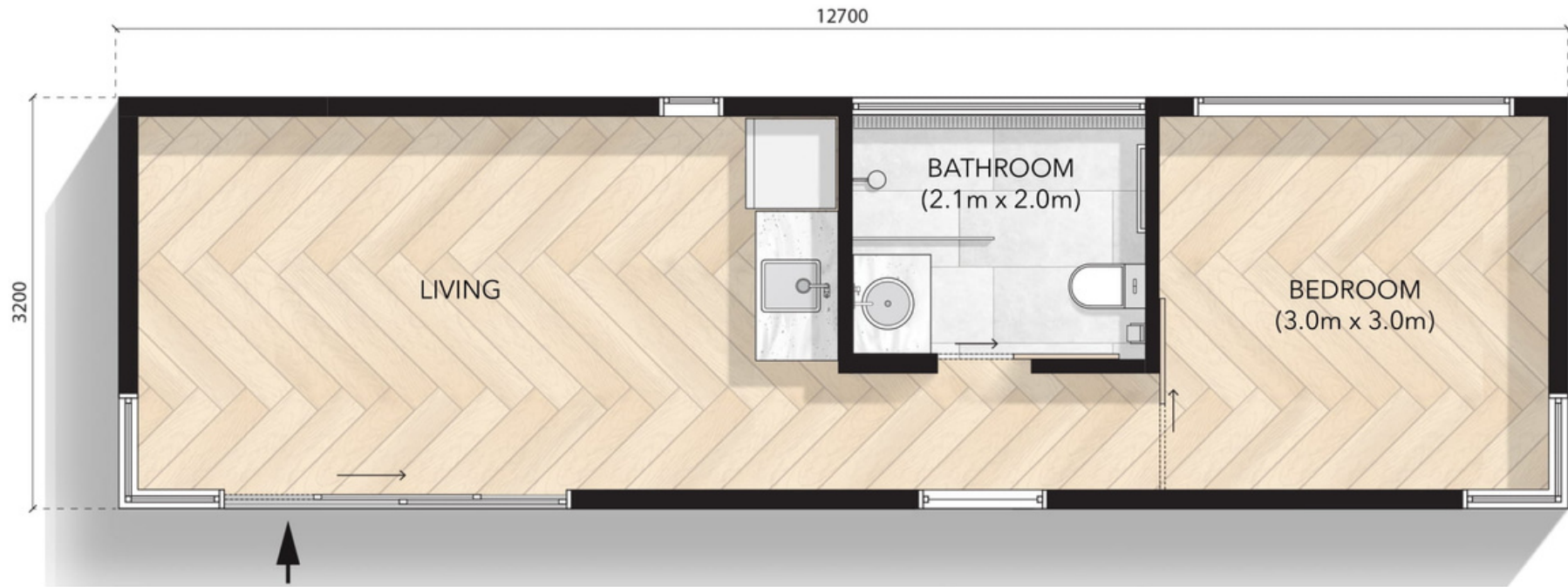
Configuration: K1 Kitchenette, B2 bathroom

MODN-12x3.2-KING-BR2KT1



MODNPODS

MODULAR LIVING



The King

12.7m X 3.2m

Configuration: K1 Kitchenette, B3 bathroom,
one bedroom

MODN-12x3.2-KING-BBR3KT1



MODNPODS

MODULAR LIVING



The King

12.7m X 3.2m

Configuration: K3 Kitchen, B3 bathroom,
one bedroom

MODN-12x3.2-KING-BBR3K3



MODNPODS

MODULAR LIVING



MODNPODS

— MODULAR LIVING —

P: 1 300 418 226

E: info@modnpods.com.au

W: modnpods.com.au



Scan or click the QR
Code to download
our spec sheet.

For up-to-date pricing, head to modnpods.com.au/pricing