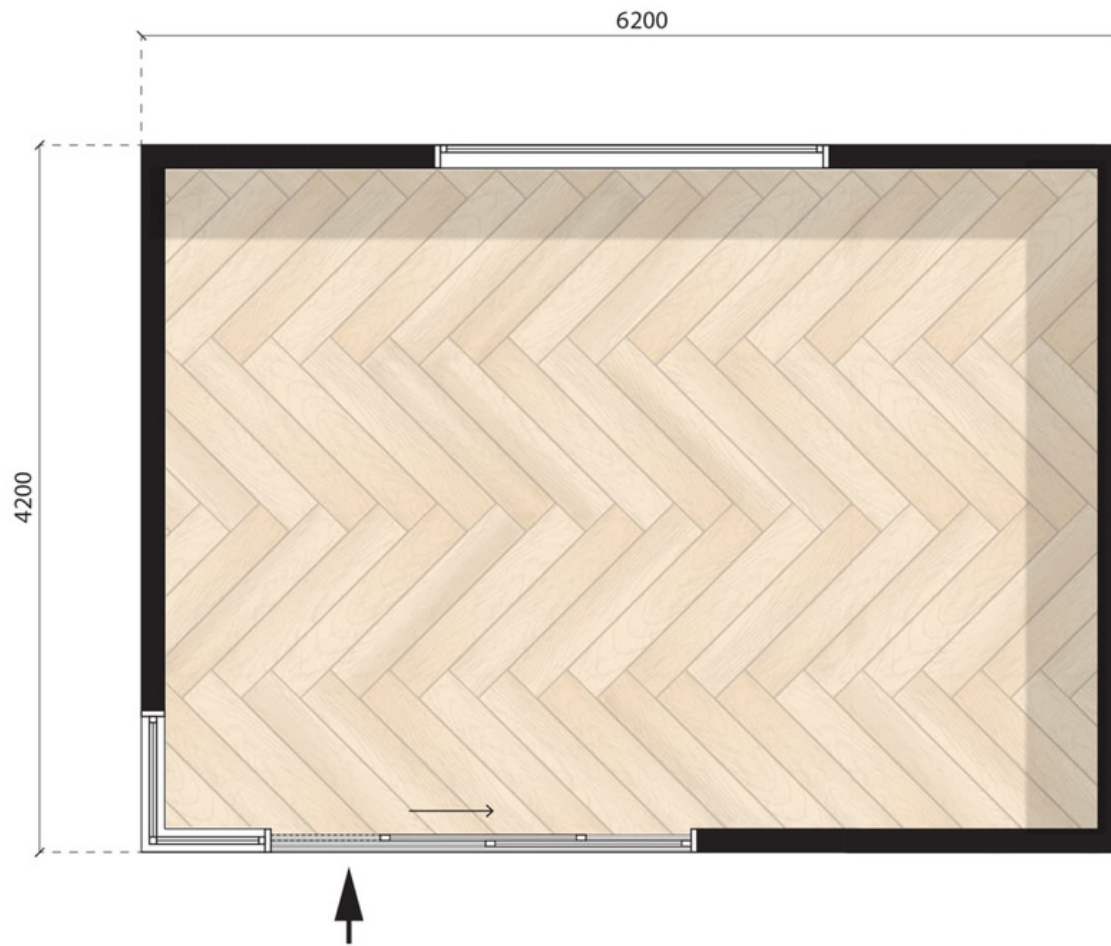


# The Drifter

6.2m X 4.2m



*Please note: floor plans are intended to give a general indication of the proposed layout only. All images and dimensions are not intended to form part any contract or warranty.*



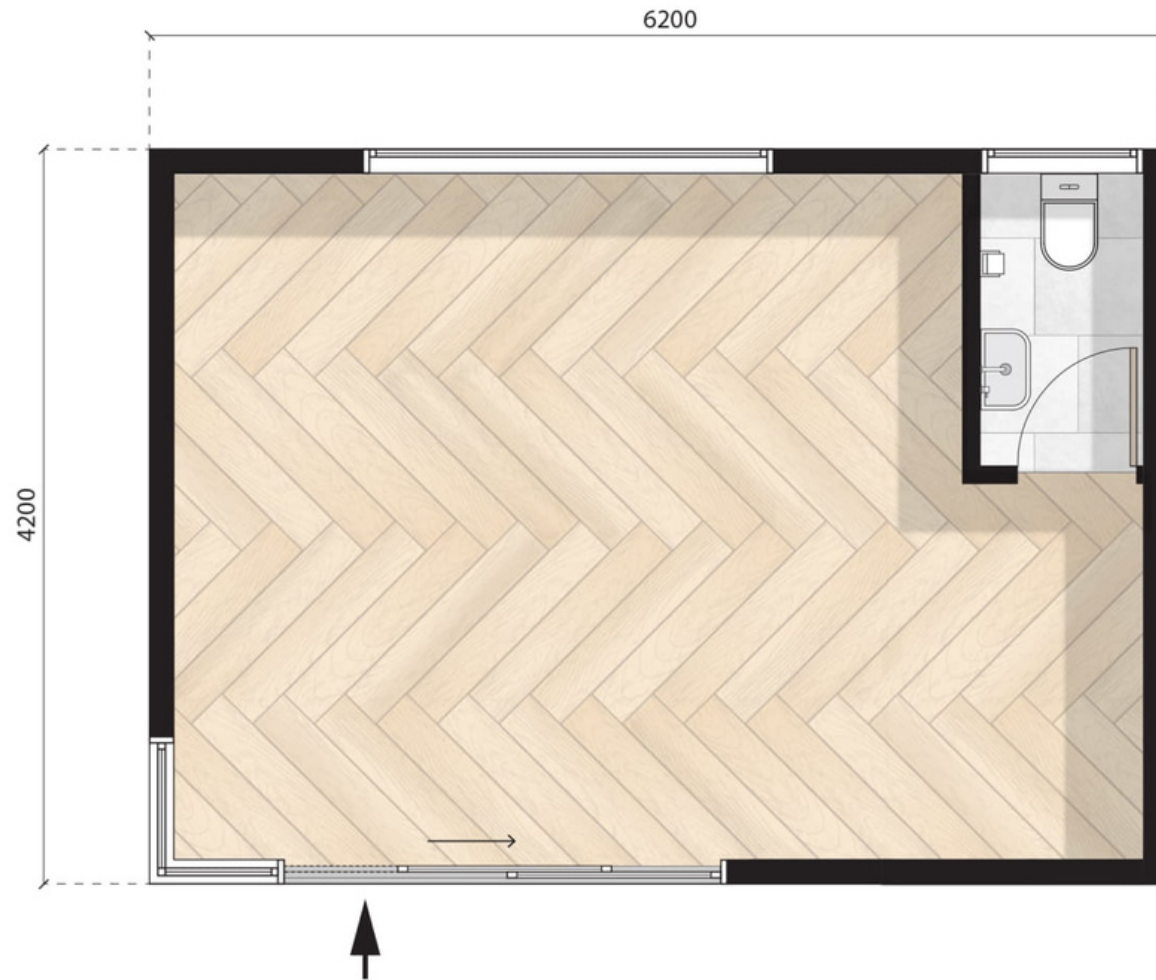
# The Drifter

6.2m X 4.2m

Configuration: Open plan

*MODN-6x4.2-DRIFT-OP*





# The Drifter

6.2m X 4.2m

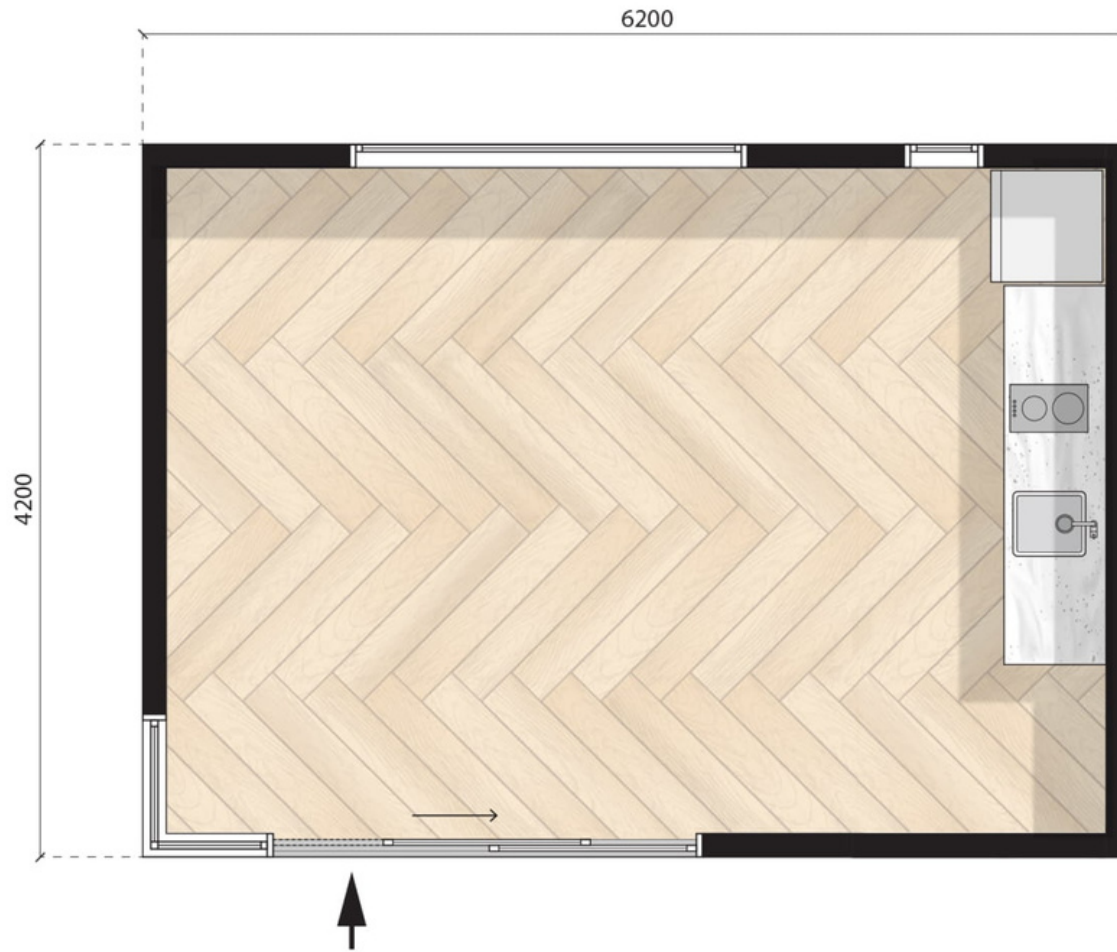
Configuration: Powder room

MODN-6x4.2-DRIFT-PR



MODNPODS

MODULAR LIVING



# The Drifter

6.2m X 4.2m

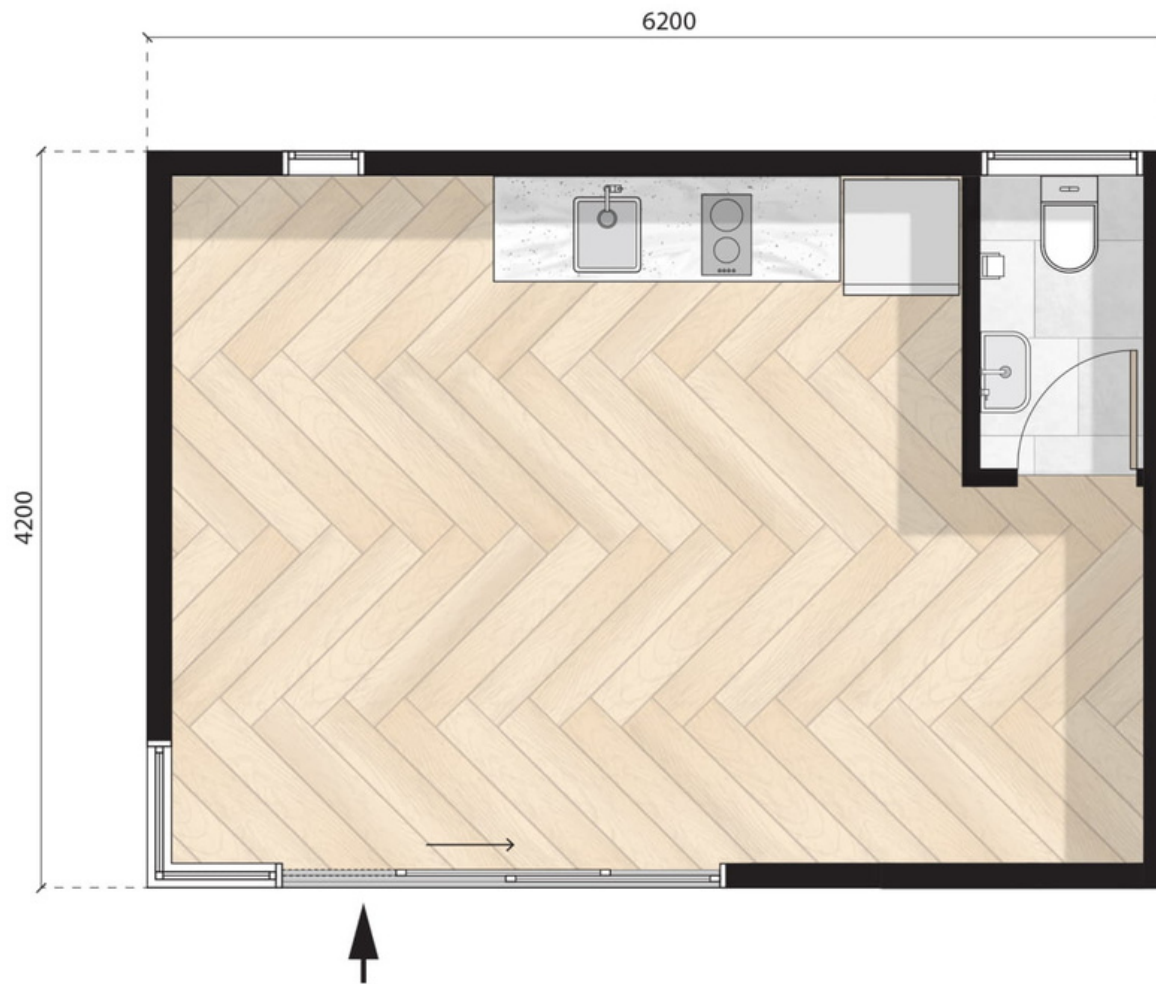
Configuration: K2 Kitchenette

MODN-6x4.2-DRIFT-KT2



MODNPODS

MODULAR LIVING



# The Drifter

6.2m X 4.2m

Configuration: Powder room + K2 kitchenette

MODN-6x4.2-DRIFT-KT2PR



MODNPODS

MODULAR LIVING



# The Drifter

6.2m X 4.2m

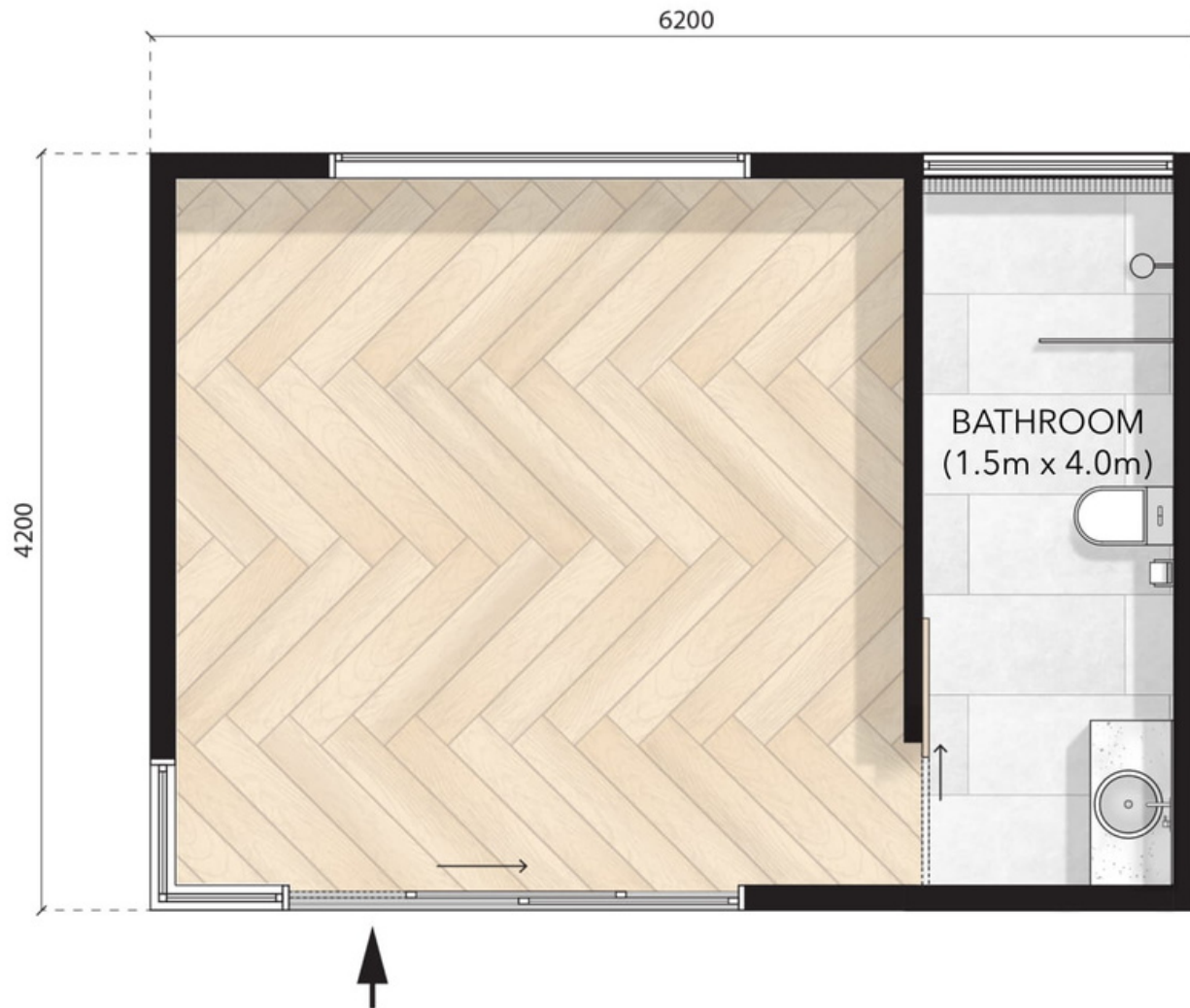
Configuration: B2 Bathroom + K2 kitchenette

MODN-6x4.2-DRIFT-KT2BR2



MODNPODS

MODULAR LIVING



# The Drifter

6.2m X 4.2m

Configuration: B2 Bathroom

MODN-6x4.2-DRIFT-BR2



MODNPODS

MODULAR LIVING



MODNPODS

— MODULAR LIVING —

P: 1 300 418 226

E: [info@modnpods.com.au](mailto:info@modnpods.com.au)

W: [modnpods.com.au](http://modnpods.com.au)



Scan or click the QR  
Code to download  
our spec sheet.

*For up-to-date pricing, head to [modnpods.com.au/pricing](http://modnpods.com.au/pricing)*